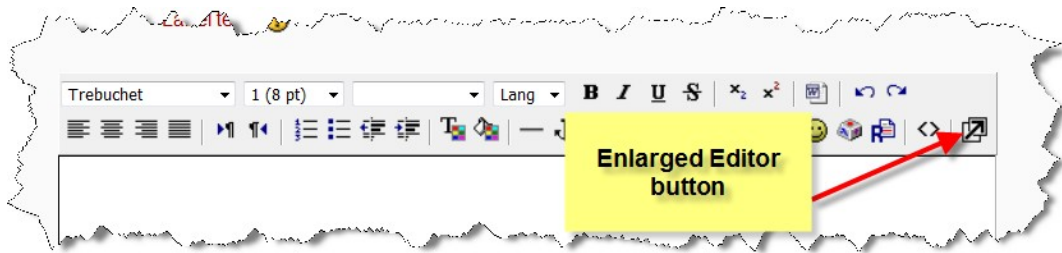
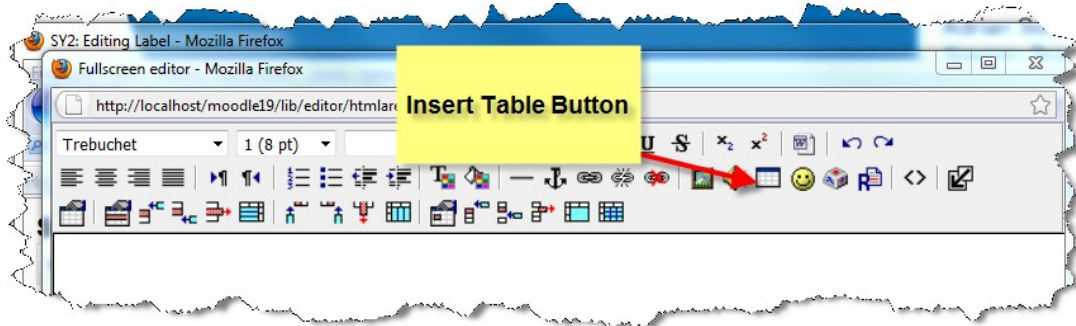


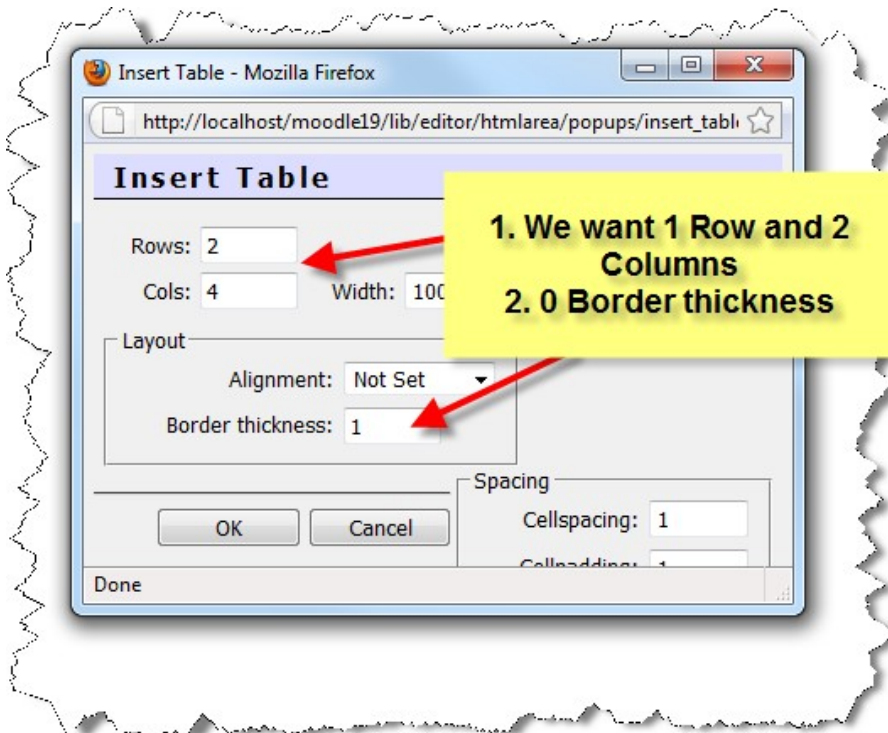
2. To help align the picture we going to use a Table. Click the **Enlarged Editor** button



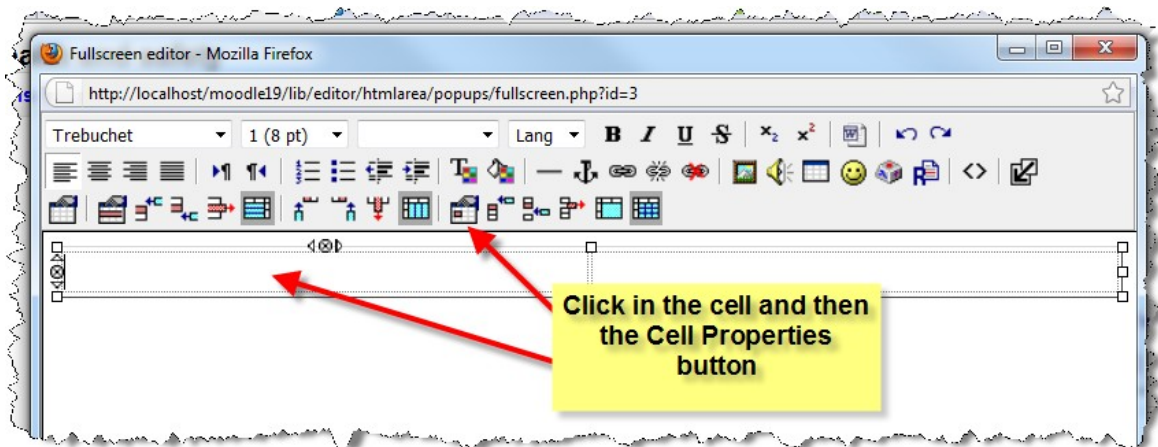
3. Then Click on the **Insert Table** button



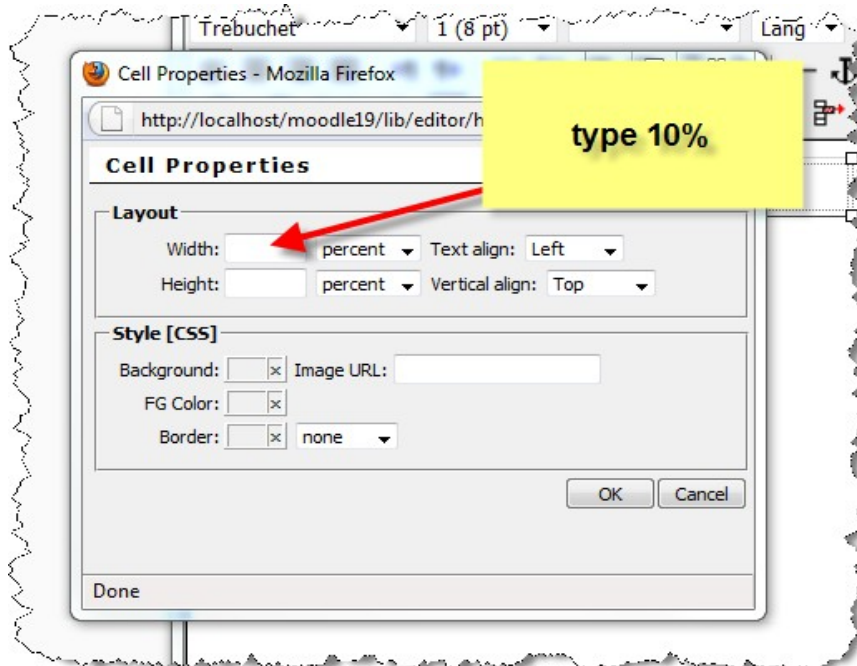
4. Set the Table up with **1 Row, 2 Columns** and with **0 Border thickness** and then Click the **OK** button



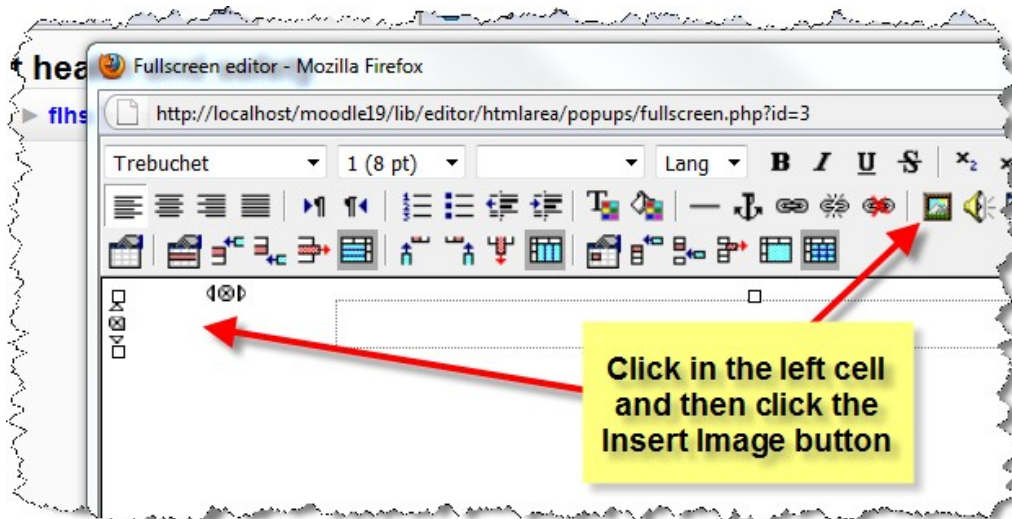
5. We want the image on the left and as it is small we will make the left cell smaller to give us more space in the right cell for the text. To change the cell size click the first cell and then the **Cell Properties** button



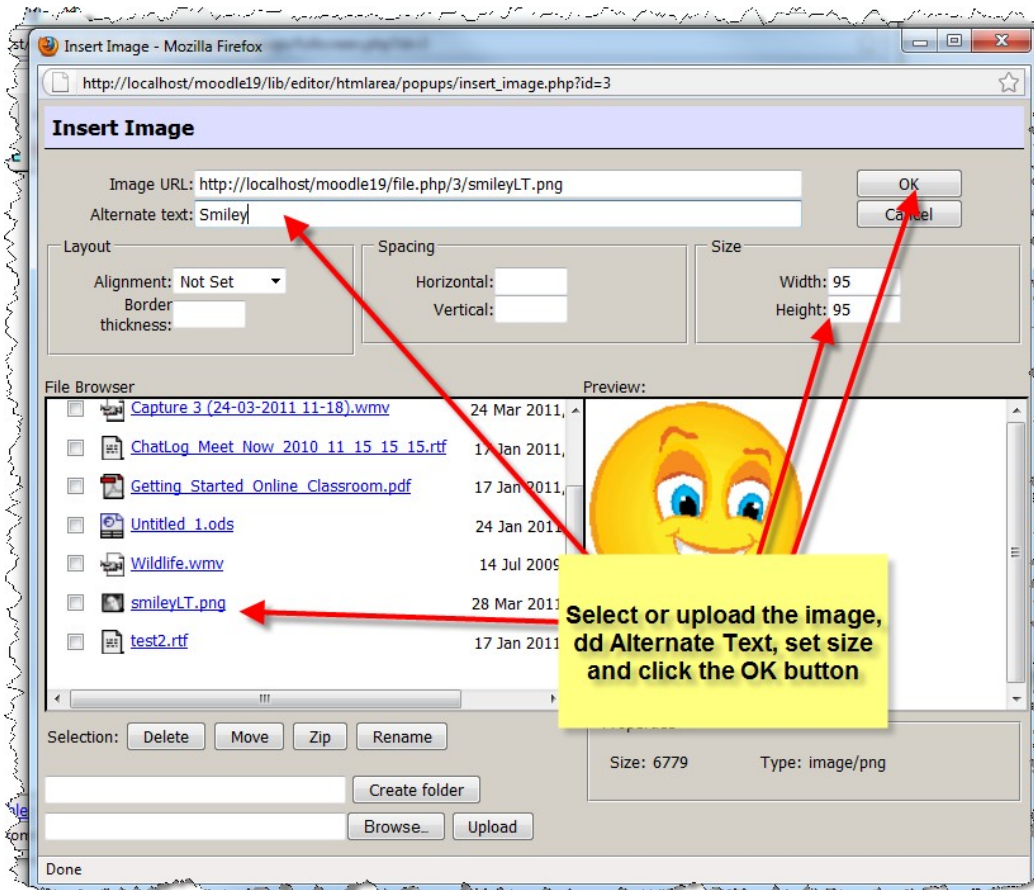
6. Type **10%** in the **width** input field and click the **OK** button



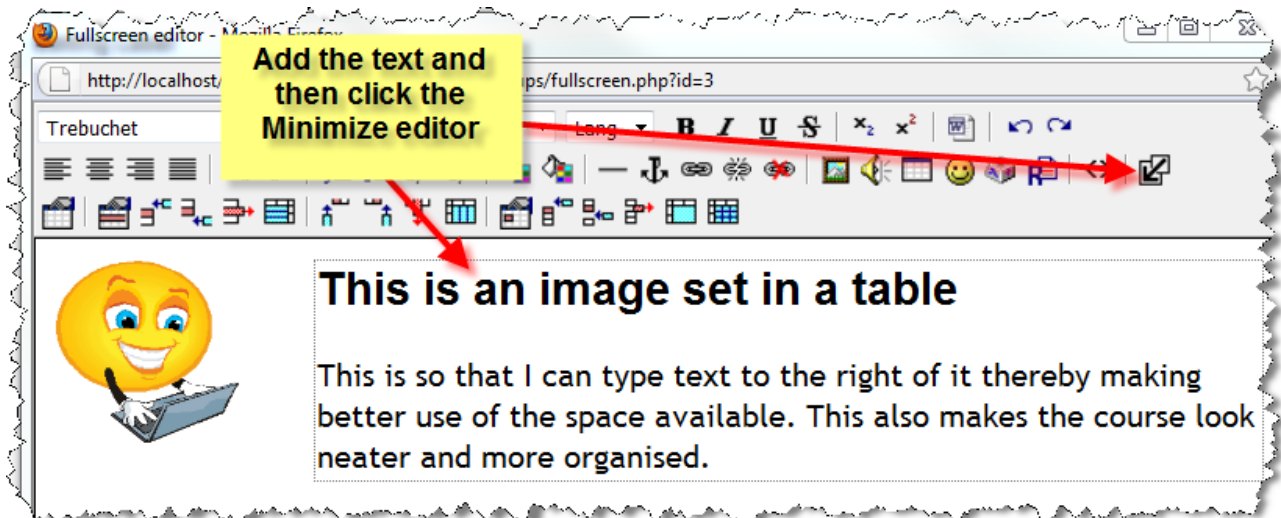
7. Click in the **left cell** and then click the **Insert Image** button in the tool bar



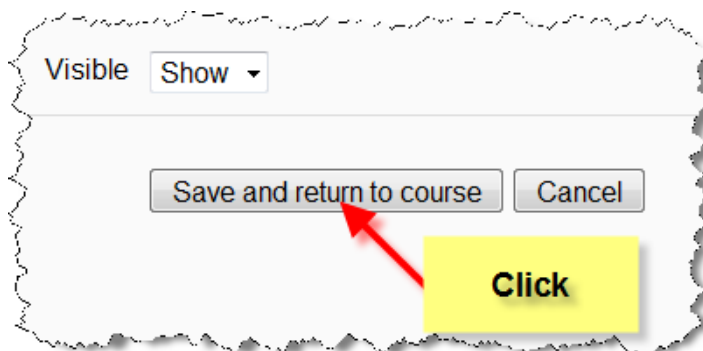
8. Select or upload and then select the image, add the **Alternate text**, change the size if needed and click the **OK** button



9. Add the text to the right hand cell and click the **Minimize Editor** button



10. Click the **Save and return to course** button



1. Add the text to the right hand cell.